



Rutland County Council

Tree Inspection Report

Reference

001

Site Address

The Oval Recreational Ground
North Luffenham
Rutland

Prepared for

North Luffenham Parish Council

Date of Inspection

20/09/2017 and 21/09/2017

Surveyed by

Stuart Kidd *Tech Cert (ArborA),
ND Arb, Cert Arb L6 (ABC), TechArborA*

Forestry Officer

Rutland County Council

Catmose

Oakham

Rutland

LE15 6HP

CONTENTS

PAGE

1.0	Introduction.....	3
2.0	Site Overview	3
3.0	Tree Summary	3
4.0	Tree Inspection.....	4
5.0	References	30

1.0 Introduction

- 1.1 This report has been prepared by Rutland County Council on behalf of North Luffenham Parish Council to present the findings of an assessment of trees located at The Oval, North Luffenham (hereafter referred to as the site),. The survey was carried out on 20/09/2017 and on the 21/09/2017.
- 1.2 The assessment of trees and recommendations given has been carried out in accordance with The Tree Maintenance & Inspection Policy.
- 1.3 Following consultation with the Planning Department, it is understood that the area is situated within North Luffenham Conservation Area and therefore statutory constraints apply to the work in respect of the trees.

2.0 Site Overview

- 2.1 The purpose of the report is to provide the North Luffenham Parish Council results of an assessment of the trees' current condition, risk of harm, work management recommendations and when they next require assessment.

3.0 Tree Summary

- 3.1 A total of 86 individual trees and 1 group of trees were surveyed as part of the tree inspection.

4.0 Tree Inspection

Miscellaneous: **M-** metres **PoF** – Probability of Failure **Size**– Size of part that is assessed for failure **RoH**- Risk of harm

Age Class: Young – Only a few years old with no signs of being fully established and likely to still require artificial support

Semi-Mature – Established crown and no longer requiring artificial support

Early Mature – displaying many of the features of a mature age but has not yet reached close to its expected height

Mature – A fully developed tree reaching or close to reaching its expected maximum height.

Senescent – It is in a stage of natural decline due to its age

Ancient – Still in the senescent period but contains enough features, (set by the Woodland Trust), to be classified as a “ancient tree”

Condition: Good - No noteworthy defects. This is a tree that should continue to live on within its environment with only age being its limit.

Moderate - A tree in moderate condition is one containing noteworthy defects. These defects may be putting the tree under stress or strain, reduce its vigour, and could present a long-term issue.

Bad - A tree in bad condition is one containing significant defects that have severely compromised the tree’s structure, longevity or both. These defects are not usually reversible. A tree in bad condition is one that is in decline.

Dead - A tree classified as dead is one where the main stems and canopy structure has died. It does not necessarily mean that the entirety of the tree’s structure has died.

Veteran - A tree displaying enough features (set by the Woodland Trust) to be considered to be of high ecological value. This can be brought on by age but not necessarily so.

Priority: Priority 1 - Works to be completed within 3 weeks or less

Priority 2 - Work to be completed, due to a legal requirement, within the financial year.

Priority 3 - Work to be completed, due to a legal requirement, which is not deemed as important as priority 2.

Priority 4 - Work that is desirable but not legally essential.

ID	Tags	Species	Age	Condition	Height	Risk	Priority	Requirement Type	Comment	Next Inspection
058B	238	<i>Aesculus hippocastanum</i>	Mature	Moderate - Noteworthy defects	17m	Green 1 in over a million	Priority 4 - Not legally required	Crown-lift to 4 metres for the benefit of grass cutting operations. It is worthy to consider the installation of props or bracing systems to support branches c14m for grass cutting	Large branch has failed on the north-east side in recent weeks. Symptoms of bleeding canker is present but in small forms on just some of the branches. QTRA Target is pedestrians entering the park. It was estimated that approximately 100 people use the park daily resulting in 4 per hour. It is estimated that only a quarter of those entering the park would pass under the tree, and that it is highly likely that people would use the park during a storm. Therefore the Target is 4. The Size of part is likely to be the branches	20/09/2019

									at 60cm Size 1. PoF is 5. RoH is Green 1 in a million Some of the branches are very long, and one in particular, situated on the west side appears to be a potential defect as it has a lot of weight on one end, bends in the centre, and has splits in the bark at the area of bend. Large branch has failed on the north-east side in recent weeks. Symptoms of bleeding canker is present but in small forms on just some of the branches.	
058C	237	<i>Tilia cordata</i>	Senescent	Moribund	4m	Green 1 in over a million			Numerous sporophores of Gandoderma fungus. This tree has been topped significantly. He tree now remains with very little life,	20/09/2022

									however it is worthy of retention as a wildlife benefit	
058D	236	<i>Tilia cordata</i>	Mature	Good	27m	Green 1 in over a million	Priority 3 - Legally Req. Low	Crown-lift to clear adjacent structures and to benefit grass cutting operations	Asymmetrical crown due to competing trees. Involved in a private dispute with alleged property damage	20/09/2020
058E	235	<i>Tilia cordata</i>	Mature	Good	26m	Green 1 in over a million	Priority 4 - Not legally required	Crown-lift to 4 metres for the benefit of grass cutting operations.		20/09/2020
058F	234	<i>Tilia cordata</i>	Mature	Good	26m	Green 1 in over a million	Priority 4 - Not legally required	Crown-lift to 4 metres for the benefit of grass cutting operations.		20/09/2020
058G	232	<i>Tilia cordata</i>	Mature	Bad	8m	Green 1 in over a million	Priority 4 - Not legally required	Removal of basal/epicormic Growth to 2.4 metres for the benefit of grass cutting operations.	Previously topped resulting in numerous reaction branches with tight fork unions	20/09/2022
058H	231	<i>Tilia cordata</i>	Mature	Bad	8m	Green 1 in over a million	Priority 4 - Not legally required	Basal growth only	Previously topped resulting in numerous reaction	20/09/2022

									branches with tight fork unions	
058J	229	<i>Tilia cordata</i>	Mature	Bad	8m	Green 1 in over a million	Priority 4 - Not legally required	Removal of basal/epicormic Growth to 2.4 metres for the benefit of grass cutting operations.	Previously topped resulting in numerous reaction branches with tight fork unions	20/09/2022
058K	225	<i>Tilia cordata</i>	Mature	Bad	12m	Green 1 in over a million	Priority 4 - Not legally required	Removal of basal/epicormic Growth to 2.4 metres for the benefit of grass cutting operations.	Previously topped resulting in numerous reaction branches with tight fork unions	20/09/2022
058L	222	<i>Tilia cordata</i>	Mature	Bad	8.5m	Green 1 in over a million	Priority 4 - Not legally required	Removal of basal/epicormic Growth to 2.4 metres for the benefit of grass cutting operations.	Previously topped resulting in numerous reaction branches with tight fork unions. Sporophores of Gandoderma fungus	20/09/2022
058M	221	<i>Tilia cordata</i>	Semi-mature	Moderate - Noteworthy defects	7m	Green 1 in over a million			Leaning northwards due to competing trees	20/09/2022
058N	223	<i>Prunus avium</i>	Mature	Good	14m	Green 1 in over	Priority 3 - Legally Req. Low	Crown-lift to 6 metres over		20/09/2022

						a million		garden and structures		
058P	224	<i>Prunus avium</i>	Mature	Good	11m	Green 1 in over a million	Priority 3 - Legally Req. Low	Crown-lift to 6 metres over garden and structures		20/09/2022
058Q	226	<i>Prunus avium</i>	Mature	Moderate - Noteworthy defects	11m	Green 1 in over a million	Priority 3 - Legally Req. Low	Crown reduce to clear boundary	Twin stem forming from ground level forming a compression fork	20/09/2022
058R	227	<i>Tilia cordata</i>	Semi-mature	Good	15m	Green 1 in over a million				20/09/2022
058S	230	<i>Tilia cordata</i>	Semi-mature	Good	15m	Green 1 in over a million				20/09/2022
058T	233	<i>Tilia cordata</i>	Semi-mature	Good	15m	Green 1 in over a million				20/09/2022
058U	228	<i>Tilia cordata</i>	Mature	Bad	8m	Green 1 in over a million	Priority 4 - Not legally required	Removal of basal/epicormic Growth to 2.4 metres for the benefit of grass cutting operations.	Previously topped resulting in numerous reaction branches with tight fork unions	20/09/2022

058W	260	<i>Tilia cordata</i>	Mature	Good	27m	Green 1 in over a million	Priority 3 - Legally Req. Low	Crown-lift to 4 metres for the benefit of grass cutting operations.		20/09/2022
058X	257	<i>Tilia cordata</i>	Mature	Good	27m	Green 1 in over a million				20/09/2020
058Y	259	<i>Tilia cordata</i>	Mature	Good	27m	Green 1 in over a million				20/09/2020
058Z	258	<i>Tilia cordata</i>	Mature	Good	27m	Green 1 in over a million				20/09/2020
0590	256	<i>Prunus avium</i>	Early mature	Moderate - Noteworthy defects	7m	Green 1 in over a million	Priority 2 - Legally Req. High	Crown-lift to 6 metres over road and signs, and 4m over gate to allow pedestrian access into park.		20/09/2020
0591	255	<i>Prunus avium</i>	Semi-mature	Moderate - Noteworthy defects	5.5m	Green 1 in over a million				20/09/2020
0592	252	<i>Tilia cordata</i>	Mature	Moderate - Noteworthy defects	27m	Green 1 in over a million	Priority 3 - Legally Req. Low	Remove dead branches within crown	A small amount of dead branches within the crown. From using a sounding mallet the tree showed to	20/09/2019

									have a lot of weak outer bark	
0593	254	<i>Tilia cordata</i>	Mature	Moderate - Noteworthy defects	16m	Green 1 in over a million	Priority 2 - Legally Req. High	Crown-lift 6 metres over road.	The height of this tree is significantly shorter than the three adjacent. Due to the crown being in full leaf it was not possible to determine if this was due to health or previous management	20/09/2020
0594	253	<i>Tilia cordata</i>	Mature	Good	24m	Green 1 in over a million	Priority 4 - Not legally required	Basal growth only		20/09/2020
0595	250	<i>Tilia cordata</i>	Mature	Moderate - Noteworthy defects	27m	Green 1 in over a million	Priority 4 - Not legally required	Remove deadwood	Dead branches within crown	20/09/2020
0596	251	<i>Tilia cordata</i>	Mature	Bad	7m	Green 1 in over a million	Priority 4 - Not legally required	Removal of basal/epicormic Growth to 2.4 metres for the benefit of grass cutting operations.	Previously topped resulting in numerous reaction branches with tight fork unions. Delaminating bark	20/09/2022
0597	249	<i>Tilia cordata</i>	Mature	Bad	7m	Green 1 in over	Priority 4 - Not	Removal of basal/epicormic Growth to 2.4	Previously topped resulting in numerous reaction	20/09/2022

						a million	legally required	metres for the benefit of grass cutting operations.	branches with tight fork unions	
0598	247	<i>Tilia cordata</i>	Mature	Bad	8m	Green 1 in over a million	Priority 4 - Not legally required	Removal of basal/epicormic Growth to 2.4 metres for the benefit of grass cutting operations, and to clear wall.	Previously topped resulting in numerous reaction branches with tight fork unions	20/09/2022
0599	248	<i>Tilia cordata</i>	Mature	Bad	8m	Green 1 in over a million	Priority 4 - Not legally required	Removal of basal/epicormic Growth to 2.4 metres for the benefit of grass cutting operations.	Previously topped resulting in numerous reaction branches with tight fork unions	20/09/2022
059A	246	<i>Tilia cordata</i>	Mature	Bad	8m	Green 1 in over a million	Priority 4 - Not legally required	Removal of basal/epicormic Growth to 2.4 metres for the benefit of grass cutting operations.		20/09/2022
059B	245	<i>Tilia cordata</i>	Mature	Bad	8m	Green 1 in over a million	Priority 3 - Legally Req. Low	Removal of basal/epicormic Growth to 2.4 metres for the benefit of grass cutting	Previously topped resulting in numerous reaction branches with tight fork unions	20/09/2022

								operations, and to clear wall.		
059C	244	<i>Tilia cordata</i>	Mature	Bad	8m	Green 1 in over a million	Priority 4 - Not legally required	Removal of basal/epicormic Growth to 2.4 metres for the benefit of grass cutting operations.		20/09/2022
059D	239	<i>Aesculus x carnea</i>	Semi-mature	Moderate - Noteworthy defects	13m	Green 1 in over a million	Priority 4 - Not legally required	Crown-lift to 4 metres for the benefit of grass cutting operations.	Delaminating bark and stem wounds. Also bud proliferation	20/09/2019
059E	240	<i>Crataegus laevigata</i>	Semi-mature	Moderate - Noteworthy defects	7m	Yellow 1 in 50,000	Priority 2 - Legally Req. High	Fell to ground level	Stem union situated at 1.5m above ground level, which has a split, has formed exposing sapwood that is crumbling. QTRA Target is 3 based on pedestrians at 2 -4 per hour due to its close proximity to the entry of the play area. One Size of branch is 240mm, so S3. PoF	20/09/2019

									is 2. RoH is yellow 1 in 50,000	
059F	201	<i>Tilia cordata</i>	Semi-mature	Good	10m	Green 1 in over a million	Priority 4 - Not legally required	Crown-lift 6 metres over garden and 4m elsewhere		20/09/2022
059G	165	<i>Acer pseudoplatanus</i>	Semi-mature	Moderate - Noteworthy defects	16m	Green 1 in over a million			Compression fork at stem union approximately three metres above ground	20/09/2022
059H	164	<i>Acer pseudoplatanus</i>	Semi-mature	Good	16m	Green 1 in over a million	Priority 4 - Not legally required	Crown reduce to clear telecom wire by 3m, and crown-lift 4 metre for grass cutting		20/09/2022
059J	166	<i>Acer pseudoplatanus</i>	Semi-mature	Good	16m	Green 1 in over a million	Priority 4 - Not legally required	Crown reduce to clear lamp post by 3m		20/09/2022
059K	167	<i>Tilia platyphyllos</i>	Semi-mature	Good	15m	Green 1 in over a million	Priority 4 - Not legally required	Crown-lift 6 metres over play area		20/09/2022

059L	169	<i>Aesculus hippocastanum</i>	Mature	Bad	13m	Yellow 1 in a million			<p>Advanced signs of bleeding canker on stem via black spots and delaminating bark. Moderate soar of Cameraria ohridella.</p> <p>QTRA Target is road. Target based on there being 18 likely houses that will use road daily x 3 cars = 54. It is accepted that more cars will use during school rush, deliveries ect. But this is not likely to exceed the target 3 threshold of 470 cars per day.</p> <p>Target is 3. Size is stem Size 1. PoF is 5. RoH is Green</p> <p>QTRA Target is pedestrians under branch on north-west side. Grass under this section is long indicating no or little use. T4 x S2 x PoF 3 =</p>	21/09/2019
------	-----	-------------------------------	--------	-----	-----	-----------------------------	--	--	---	------------

									yellow 1 in a million. From a safety perspective this tree requires no work however a long term management recursion of this tree is worthy of consideration.	
059M	170	<i>Tilia cordata</i>	Semi-mature	Good	11m	Green 1 in over a million				20/09/2022
059N	172	<i>Tilia cordata</i>	Semi-mature	Good	11m	Green 1 in over a million				20/09/2022
059P	171	<i>Tilia platyphyllos</i>	Semi-mature	Good	12m	Green 1 in over a million	Priority 4 - Not legally required	Crown-lift 4 metres over play area and grass		20/09/2022
059Q		<i>Castanea sativa</i>	Young	Good	2m	Green 1 in over a million				21/09/2022

059R	173	<i>Aesculus hippocastanum</i>	Mature	Moderate - Noteworthy defects	16m	Green 1 in over a million			Minor amount of <i>Cameraria ohridella</i>	21/09/2022
059S	174	<i>Aesculus hippocastanum</i>	Mature	Moderate - Noteworthy defects	14m	Green 1 in over a million	Priority 4 - Not legally required	Crown-lift to 4 metres for the benefit of grass cutting operations.	Minor amount of <i>Cameraria ohridella</i> . Small indicators of bleeding canker via some black spots	21/09/2022
059T	175	<i>Aesculus hippocastanum</i>	Mature	Moderate - Noteworthy defects	14m	Yellow 1 in a million	Priority 4 - Not legally required	Crown-lift to 4 metres for the benefit of grass cutting operations.	Minor amount of <i>Cameraria ohridella</i> . Some bark delamination	21/09/2022
059U	176	<i>Aesculus hippocastanum</i>	Mature	Moderate - Noteworthy defects	14m	Yellow 1 in 400,000	Priority 4 - Not legally required	Crown-lift to 4 metres for the benefit of grass cutting operations.	Compression fork at two stem unions approximately three metres above ground unions with girdling present. QTRA Target is pedestrians entering park. T4 x S1 x PoF 3= yellow 1 in 400,000.	21/09/2019
059V	177	<i>Aesculus x carnea</i>	Mature	Moderate - Noteworthy defects	11m	Yellow 1 in 400,000			Signs of bleeding canker via orange and black spots on stem. Major bark girdling at stem union	21/09/2019

									approximately three metres above ground. QTRA Target is pedestrians T4 x S1 x PoF 3 = yellow 1 in 400000 RoH.	
059W	178	<i>Aesculus hippocastanum</i>	Mature	Bad	14m	Yellow 1 in 400,000	Priority 4 - Not legally required	Crown-lift to 4 metres for the benefit of grass cutting operations.	This tree has lost a large section of its crown via failure. Tree has been significantly reduced, likely as a result of this damage. Numerous indicators of bleeding canker via orange and black spots on stem and branches, bark delamination and stem and branch wounds.	21/09/2019
059X	179	<i>Aesculus x carnea</i>	Early mature	Moderate - Noteworthy defects	13m	Green 1 in over a million	Priority 4 - Not legally required	Crown-lift to 4 metres for the benefit of grass cutting operations.	Minor signs of bleeding canker	21/09/2020
059Y	180	<i>Aesculus hippocastanum</i>	Mature	Moderate - Noteworthy defects	18m	Green 1 in over a million	Priority 4 - Not legally required	Crown-lift to 4 metres for the benefit of grass	Sparse upper canopy	21/09/2020

								cutting operations.		
059Z	181	<i>Aesculus x carnea</i>	Semi-mature	Moderate - Noteworthy defects	11m	Green 1 in over a million			Signs of bleeding canker via orange and black spots on stem	21/09/2020
05A0	182	<i>Aesculus hippocastanum</i>	Semi-mature	Moderate - Noteworthy defects	8.5m	Green 1 in over a million	Priority 4 - Not legally required	Crown-lift to 4 metres for the benefit of grass cutting operations.	Minor amount of Cameraria ohridella	21/09/2022
05A1	183	<i>Aesculus x carnea</i>	Semi-mature	Moderate - Noteworthy defects	9.5m	Green 1 in over a million	Priority 4 - Not legally required	Crown-lift to 4 metres for the benefit of grass cutting operations.		21/09/2020
05A2	185	<i>Aesculus hippocastanum</i>	Semi-mature	Moderate - Noteworthy defects	7.5m	Green 1 in over a million			Windswept appearance, lower stem wound and minor amount of Cameraria ohridella.	21/09/2022
05A3	184	<i>Aesculus hippocastanum</i>	Semi-mature	Bad	10m	Yellow 1 in 400,000			Major bark delamination resulting in exposed sapwood	21/09/2019
05A4	184	<i>Aesculus x carnea</i>	Early mature	Moderate - Noteworthy defects	12m	Green 1 in over a million	Priority 4 - Not legally required	Crown-lift to 4 metres for the benefit of grass cutting operations.	Major stem wound	21/09/2020

05A5	187	<i>Robinia pseudoacacia</i>	Semi-mature	Good	14m	Green 1 in over a million				21/09/2022
05A6	188	<i>Aesculus hippocastanum</i>	Semi-mature	Moderate - Noteworthy defects	8m	Green 1 in over a million	Priority 4 - Not legally required	Crown-lift to 4 metres for the benefit of grass cutting operations.	Lower stem wounds. Minor amount of <i>Cameraria ohridella</i> .	21/09/2022
05A7	189	<i>Aesculus hippocastanum</i>	Mature	Moderate - Noteworthy defects	17m	Green 1 in over a million			Major bark delamination. Signs of bleeding canker via black spots. Premature leaf fall within the upper crown. QTRA Target is T4 x S1 x PoF 4 = Green	21/09/2019
05A8	190	<i>Robinia pseudoacacia</i>	Semi-mature	Good	14m	Green 1 in over a million	Priority 2 - Legally Req. High	Crown-lift 6 metres over road and remove dead branches		21/09/2022
05A9	191	<i>Aesculus x carnea</i>	Mature	Moderate - Noteworthy defects	14m	Yellow 1 in 400,000	Priority 4 - Not legally required	Reduce west facing branch growing over garden back to branch	Major bark girdling at stem union approximately three metres above ground	21/09/2020
05AA	192	<i>Aesculus hippocastanum</i>	Mature	Moderate - Noteworthy defects	17m	Green 1 in over a million	Priority 3 - Legally Req. Low	Crown-lift 6 metres and remove dead branches. Remove two branches with	There are substantial branches that have cracks evident on the west facing side.	21/09/2020

								cracks growing toward garden. See photos.	Minor amount of Cameraria ohridella.	
05AB	193	<i>Aesculus x carnea</i>	Mature	Moderate - Noteworthy defects	15m	Green 1 in over a million			Minor amount of delaminating bark	21/09/2020
05AC	194	<i>Gleditsia triacanthos</i>	Semi-mature	Good	6m	Green 1 in over a million				21/09/2022
05AD	195	<i>Aesculus x carnea</i>	Mature	Good	15m	Green 1 in over a million	Priority 4 - Not legally required	Crown-lift to 4 metres for the benefit of grass cutting operations.	Signs of bud proliferation	21/09/2022
05AE	197	<i>Aesculus x carnea</i>	Mature	Moderate - Noteworthy defects	15m	Green 1 in over a million	Priority 4 - Not legally required	Crown-lift to 4 metres for the benefit of grass cutting operations.	Signs of bleeding canker via black spots	21/09/2022
05AF	196	<i>Aesculus hippocastanum</i>	Mature	Moderate - Noteworthy defects	14m	Green 1 in over a million	Priority 4 - Not legally required	Crown-lift to 4 metres for the benefit of grass cutting operations.	Minor amount of Cameraria ohridella possibly the cause of premature leaf fall. Bleeding canker on stem and early signs of bark delamination with	21/09/2020

									an exposed wound at the base of the tree on the eastern side. Minor amount of <i>Cameraria ohridella</i> possibly the cause of premature leaf fall.	
05AG	198	<i>Aesculus hippocastanum</i>	Mature	Moderate - Noteworthy defects	15m	Green 1 in over a million	Priority 4 - Not legally required	Crown reduce to clear cricket test area. Requires a 3 metre clearance. Crown-lift 6 metres garden and road. Crown-lift 4 metres elsewhere.	Minor amount of <i>Cameraria ohridella</i> .	21/09/2022
05AJ	199	<i>Robinia pseudoacacia</i>	Mature	Bad	10m	Green 1 in over a million	Priority 4 - Not legally required	Remove dead branches within crown	Major crown dieback with the loss of the central stem.	21/09/2022
05AK	200	<i>Prunus avium</i>	Mature	Good	10m	Green 1 in over a million	Priority 4 - Not legally required	Crown-lift to 4 metres for the benefit of grass cutting operations.		21/09/2022
05AL	281	<i>Prunus avium</i>	Mature	Good	8m	Green 1 in over a million	Priority 4 - Not legally required	Crown-lift to 4 metres for the benefit of grass cutting operations. Crown-lift 6		21/09/2022

								metres over substation.		
05AM	282	<i>Prunus avium</i>	Mature	Good	10m	Green 1 in over a million	Priority 4 - Not legally required	Crown-lift to 4 metres for the benefit of grass cutting operations.		21/09/2022
05AN	283	<i>Carpinus betulus</i>	Semi-mature	Good	10m	Green 1 in over a million				21/09/2022
05AP	284	<i>Acer pseudoplatanus</i>	Early mature	Moderate - Noteworthy defects	17m	Green 1 in over a million				21/09/2022
05AQ	285	<i>Aesculus hippocastanum</i>	Mature	Moderate - Noteworthy defects	18m	Green 1 in over a million	Priority 4 - Not legally required	Crown-lift to 4 metres for the benefit of grass cutting operations.	Minor amount of Cameraria ohridella and bleeding canker	21/09/2022
05AR	286	<i>Aesculus hippocastanum</i>	Mature	Moderate - Noteworthy defects	18m	Green 1 in over a million	Priority 4 - Not legally required	Crown-lift to 4 metres for the benefit of grass cutting operations.	Minor amount of Cameraria ohridella and bleeding canker	21/09/2022
05AS	287, 289 - 279	<i>Tilia cordata</i>	Mature	Good	23m	Green 1 in over a million	Priority 4 - Not legally required	Remove deadwood and crown-lift to 4 metres.		21/09/2022

05AT	288	<i>Tilia x europaea</i>	Semi-mature	Good	8m	Green 1 in over a million	Priority 4 - Not legally required	Crown-lift to 4 metres all round.		21/09/2022
05AU	241	<i>Tilia cordata</i>	Mature	Good	23m	Green 1 in over a million	Priority 4 - Not legally required	Removal of basal growth only		21/09/2022
05AV	280	<i>Robinia pseudoacacia</i>	Mature	Bad	10m	Green 1 in over a million	Priority 4 - Not legally required	Crown-lift to 4 metres for the benefit of grass cutting operations.	Loss of central crown	21/09/2022
05AW	242	<i>Tilia platyphyllos</i>	Mature	Good	20m	Green 1 in over a million	Priority 4 - Not legally required	Basal/epicormic Growth 2.4 metres		21/09/2022
05AX	243	<i>Aesculus x carnea</i>	Early mature	Moderate - Noteworthy defects	13m	Green 1 in over a million	Priority 4 - Not legally required	Basal/epicormic Growth 2.4 metres	Major bark girdling at branch union	21/09/2022

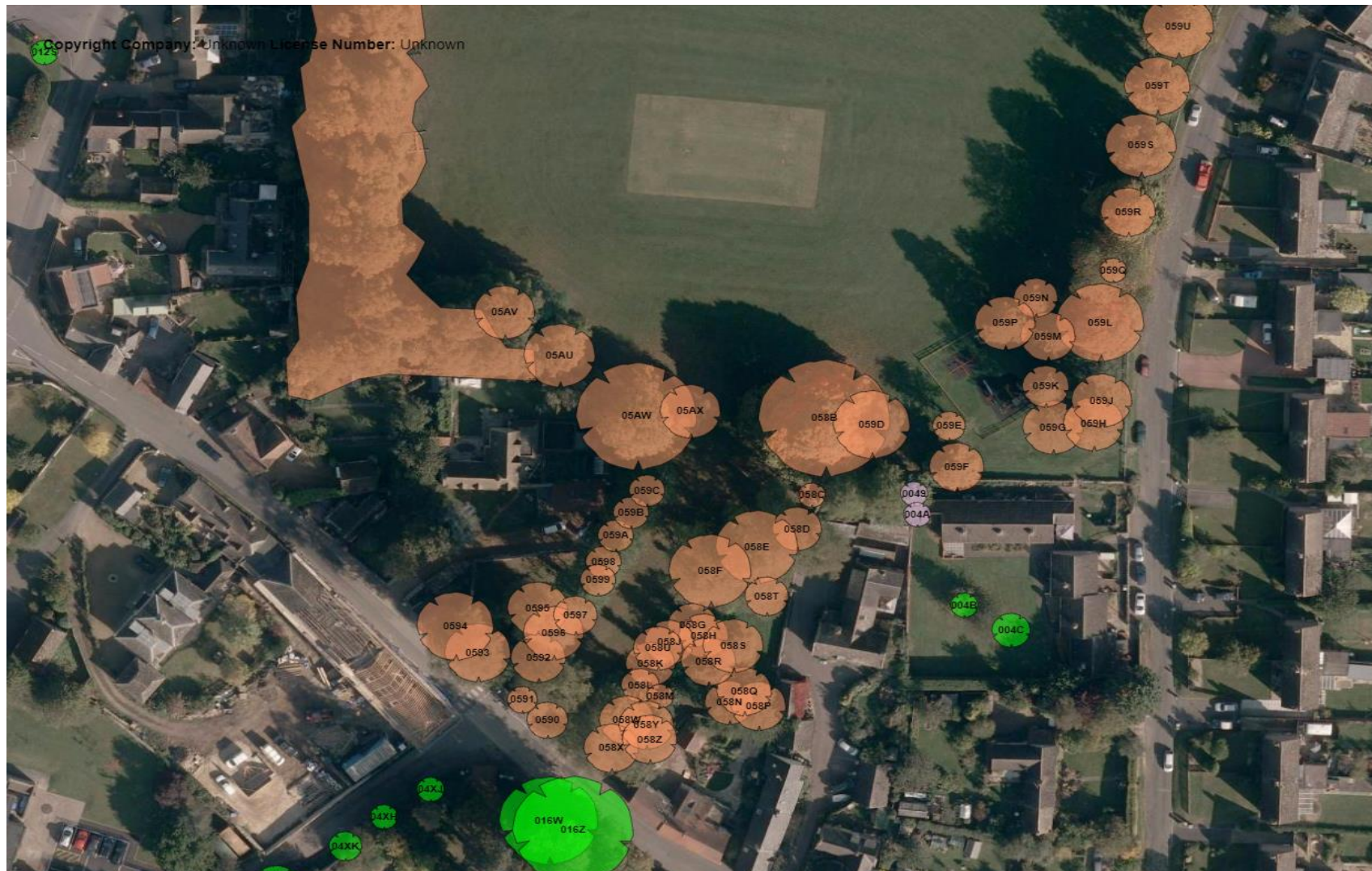
Plan 1



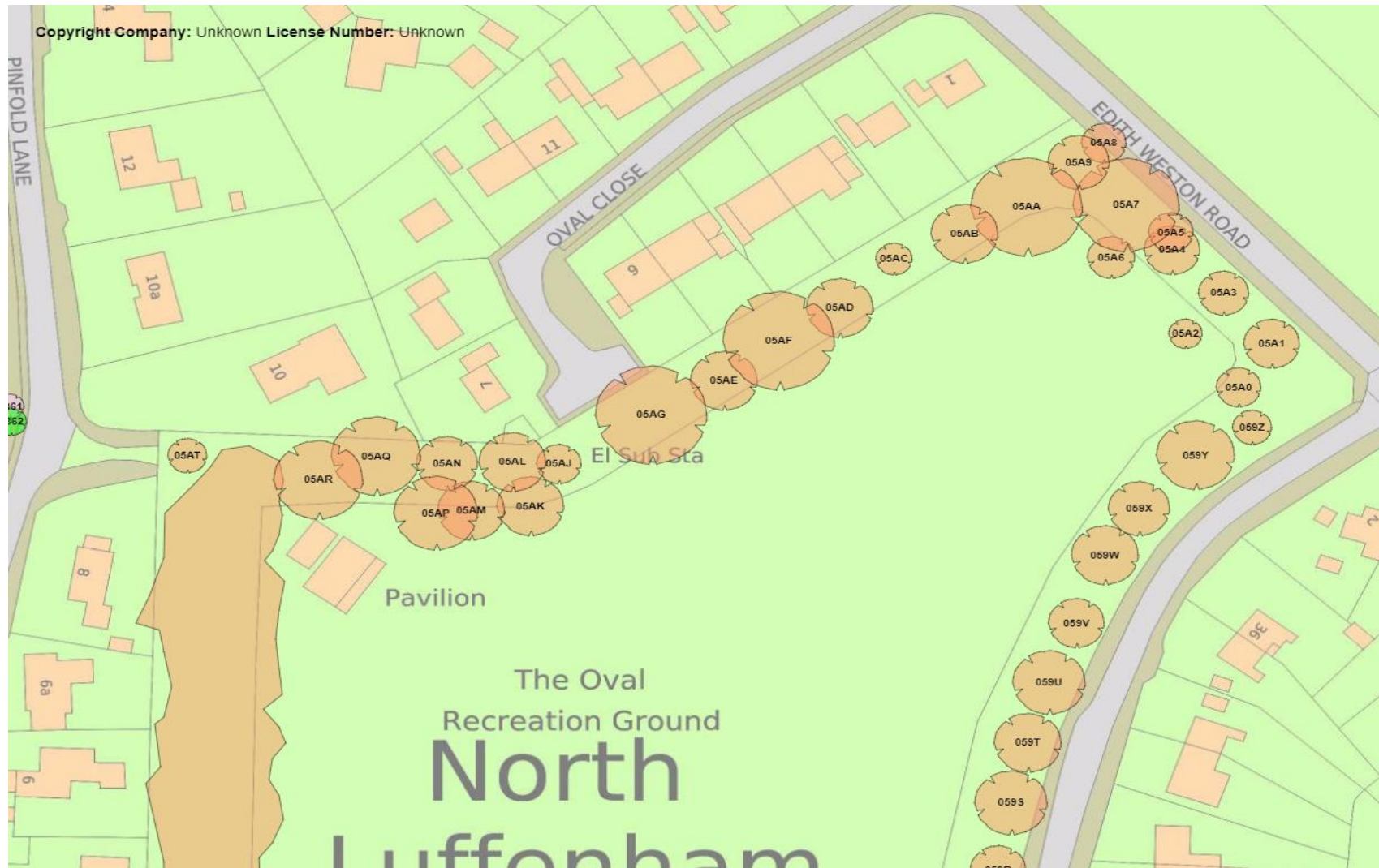
Plan 2



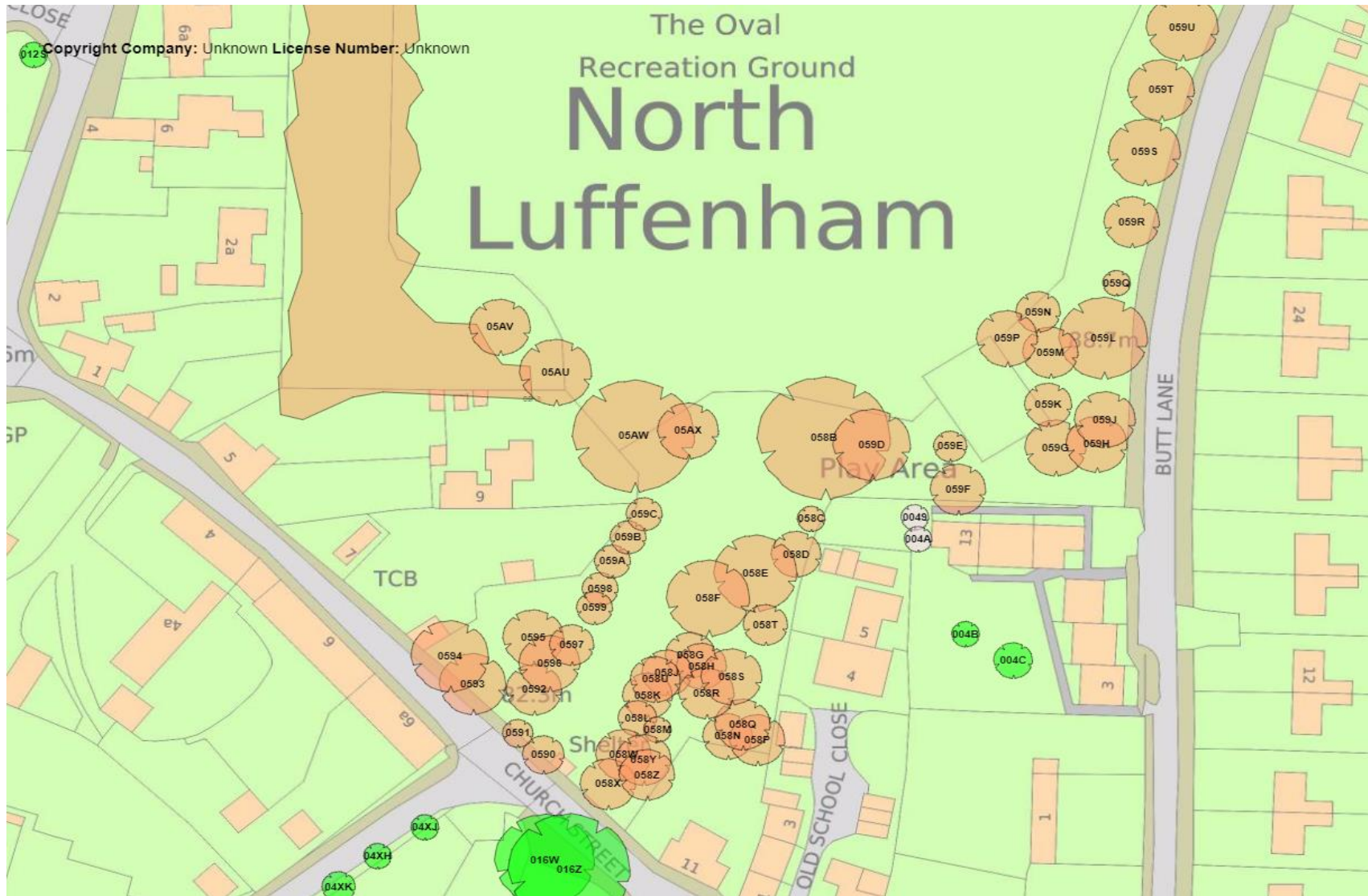
Plan 3



Plan 4



Plan 5



5.0 References

1. QTRA Quantified Tree Risk Assessment: Simply Managing Risks with Benefits. Quantified Tree Risk - User Manual - Version 5. (2015)
2. National Tree Safety Group: Common Sense Risk Management of Trees (December 2011)
3. BSi Standards Publication: BS3998 Tree Work - Recommendations (2010)